

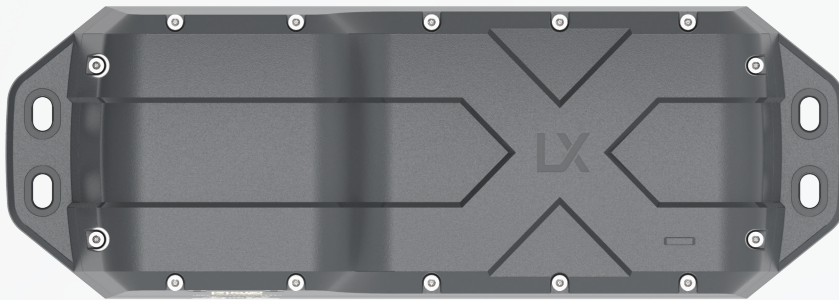
# Andromeda LTE-M + Myriota Satellite Tracker

## Battery Powered LTE-M+ Satellite Tracker



# INCYT

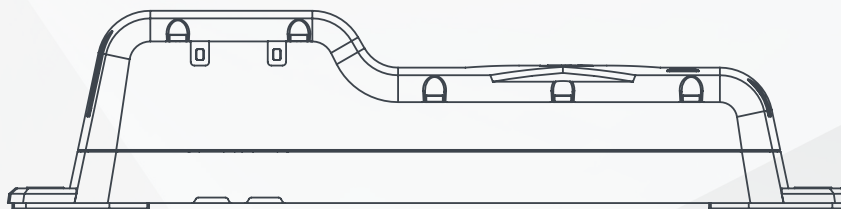
LTE-M



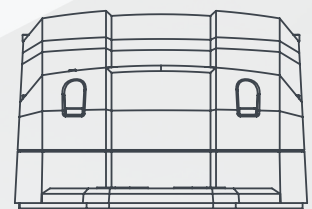
GPS tracking with satellite fallback for reliability, built in.

230 mm

80 mm



54 mm



### Track it. Sense it. Trust it.

Go beyond tracking to a place of understanding, insight and automated action. Intelligent devices don't just solve problems, they give you new insights. We welcome the machine-to-machine economy and the intelligence of things and are incredibly excited about helping our global village work better.

### Intuitive Dashboards

Get up and running in no time with our intuitive out-of-the box IoT dashboards for data visualisation & alerts. Check device status, configuration, data stream, battery levels, signal strength and last message received from anywhere in the world on desktop and mobile devices.

### Key Industries



Military  
+ mission  
control



Transport  
+ logistics



Smart Cities



Oil, gas  
+ mining



Agriculture  
+ environment



Medical



Smart vehicles  
+ parking



Smart  
infrastructure

### Attributes

<b>Radios</b>	Myriota Satellite (VHF+UHF, licensed spectrum), LTE-M, BLE 5, WiFi and GPS
<b>SIM</b>	Chip SIM (default), Nano SIM (for dev. and trials)
<b>Region</b>	Multi region LTE-M. Supported bands: 2, 3, 4, 5, 8, 12, 20, 28 Myriota Service 1 and Service 2 variants
<b>Firmware upgrade</b>	Via Incyt Dashboard over Cellular (config using app over BLE coming soon)
<b>Power</b>	Replaceable Industrial Lithium Thionyl Chloride primary battery pack
<b>Location Sense</b>	BLE Beacon and Scan, WiFi Scan, GPS
<b>Size + weight</b>	54 x 80 x 230 mm, 0.5kg
<b>Enclosure Rating</b>	IP68 / IK08
<b>Mounting option</b>	Screws, bolts or rivets
<b>Packaging</b>	Single unit retail box
<b>Storage</b>	12 months shelf life prior to activation
<b>Certifications</b>	FCC, CE, RCM, BT Sig
<b>Temp. range</b>	Operational temp range -20°C to +80°C (-10°C to +60°C recommended)

## Basic Tracking

### Every hour:

Samples device internal temperature

### Every 24h:

- The device samples its location
- Uploads data to the platform over LTE-M or Myriota Satellite during a pass where LTE-M coverage is not available
- Transmits a Bluetooth Low Energy Beacon every 5 seconds
- Samples temperature every hour

### Bluetooth Low Energy Beacon:

Transmits every 5 seconds

### Battery Life:

Up to 4.5 years when operating under recommended conditions\*

## Pro Tracking

### Every hour:

Samples device internal temperature

### Every 24h:

- The device samples its location
- Uploads data to the platform over LTE-M or Myriota Satellite during a pass where LTE-M coverage is not available

### Bluetooth Low Energy Beacon:

Transmits every 5 seconds

### Battery Life:

Up to 1.5 years when operating under recommended conditions\*

## Advanced Motion

### Every hour:

Samples device internal temperature

### Every 24h:

- The device samples its location
- Uploads data to the platform over LTE-M or Myriota Satellite during a pass, where LTE-M coverage is not available
- Transmits a Bluetooth Low Energy Beacon every 5 seconds
- Samples temperature every hour

### Motion Behaviour:

- On motion detection the device samples its location and transmits data immediately
- When device stops moving for 5mins, the device samples its location and transmits data immediately

### Battery Life:

Up to 1.5 years when operated under recommended conditions\*

\* Recommended operating conditions for Andromeda: Battery life assumes the device is within LTE-M coverage at least 50% of the time in use. Please note transmission over satellite will incur additional latency. For optimal satellite communication performance, ensure device has clear line of sight to the sky.

